



Instructions booklet (EN)

Mode d'emploi (FR)

Manual de instrucciones (ES)

Manual de instruções (PT)

PRECAUTIONS

- **Read the instructions carefully before installing and/or using the hood.**
- The manufacturer declines all responsibility for any faults, damage or fires caused by the failure to observe the above the instructions provided in this manual.
- The hood is designed for extracting cooking fumes and vapours, and is intended for domestic use only.
- Installation and adjustments should be carried out by qualified personnel.
- Check the integrity of the hood once it has been removed from the packaging. If the product is damaged, do not use it. Contact the Apell assistance service.
- Before connecting the appliance, make sure that the mains voltage is the same as the voltage indicated on the technical data label inside the appliance.
- For Class I appliances, make sure that the domestic power supply is suitably earthed.
- The minimum distance between the hob and the lower surface of the hood must be at least 650 mm for electric hob and 750 mm for gas hob.
- The air that is extracted must not be conveyed into a duct that is used for extracting fumes from appliances powered by gas or other fuels.
- Connect the air outlet from the hood to flue ducts having an adequate internal diameter, not less than 120 mm.
- Ensure that there is adequate ventilation in the room when using the cooker hood and gas appliances at the same time.
- If the power cable is damaged, it should be replaced by the manufacturer, the manufacturer's technical assistance service, or a similarly qualified person in order to avoid possible hazards.
- Comply with local authority regulations regarding the technical and safety measures to adopt for discharging the fumes.
- Warning: failure to install the screws or fixing devices in accordance with these instructions may result in an electrical hazard

WARNING

In accordance to regulation CSA 30335-2-31 Paragraph 7.12

- There is a fire risk if cleaning is not carried out in accordance with the instructions
- Do not flambè under the range hood
- **CAUTION:** accessible parts may become hot when used with cooking appliances

In accordance to regulation CSA 30335-2-31 Paragraph 7.12.1

Instructions for bonding the appliance to ground

- The grounding-type attachment plug provided with this appliance shall be connected to a grounding-type receptable installed in accordance with CSA C22.1, Canadian Electrical Code, Part I.
- In event of an electrical short circuit, bonding to ground reduces the risk of electric shock.
- **WARNING:** improper bonding to ground can result in a risk of electric shock.

In accordance to regulation CSA 30335-2-31 Paragraph 7.12.5

- If the supply cord is damaged, it must be replaced by the manufacturer, its service agent or similar qualified persons in order to avoid a hazard.

USE

- Do not cook or fry in such a way that produces high intensity open flames, which can be drawn up by the hood when in operation and cause a fire.
- It is strictly forbidden to flambé food under the hood; fire hazard
- The hood can be used by children under 8 years of age and by persons with reduced physical, sensory or mental capabilities, or who lack experience or knowledge, as long as they are supervised or have received instructions on how to use the appliance safely and understand the hazards involved.
- Children should be supervised to make sure that they do not play with the appliance.

CAUTION: The accessible parts of the hood may become very hot when the hob is in use.

MAINTENANCE

- Before carrying out cleaning or maintenance, disconnect the hood from the mains power supply by removing the plug or switching off the main circuit breaker.
- The hood should be cleaned regularly, both internally and externally (at least once a month) and in any case, comply with the maintenance instructions. Failure to follow the instructions for cleaning the hood and replacing the filters can lead to the risk of fire.
- Clean the surfaces of the hood using a damp cloth and a neutral liquid detergent.
- Children should be supervised to make sure that they do not play with the appliance.
- Cleaning and maintenance should not be carried out by children without adult supervision.
- **THE MANUFACTURER DECLINES ANY LIABILITY IF THE ABOVE INSTRUCTIONS ARE NOT FOLLOWED**

USE

This appliance is designed to be used as a **EXTRACTOR** hood (air is extracted to the outside) or as a **FILTER** hood (air is recirculated indoors)



EXTRACTOR VERSION

In this version, the fumes are exhausted to the outside of the building through an exhaust duct connected to the motor outlet.

The diameter of the exhaust duct must be the same as that of the connecting ring and not less than 120mm.

Using ducts and wall outlets that have a smaller diameter will reduce suction and lead to an increase in noise.

CAUTION:

If the hood is fitted with activated carbon filter(s), these should be removed.



FILTER VERSION

If it is not possible to discharge fumes to the outside, the hood can be used as a filter.

To use the hood in this mode, you have to install an additional activated carbon filtration system (optional).

In this configuration, the air and vapours drawn in are cleaned and recirculated into the room via the ventilation grids on the side of the chimney.

NOTE: Using the hood in the filter mode may increase the perceived noise level.

INSTALLATION INSTRUCTIONS

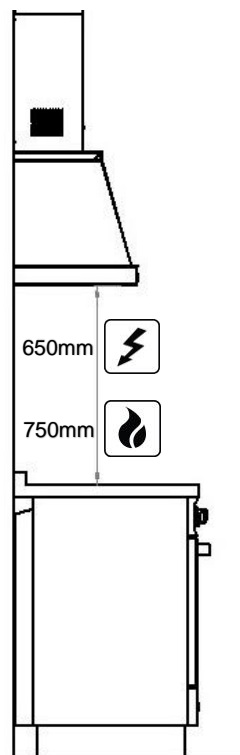
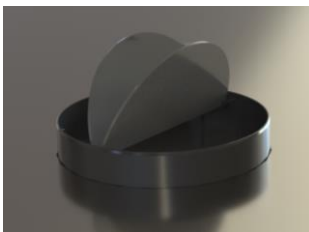
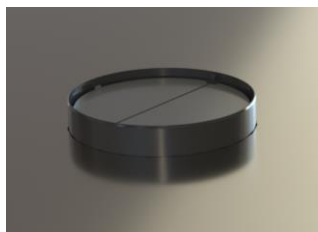
Before installation:

- Make sure that the product is of a suitable size for the area in which it is to be installed.
- Make sure that (for transport purposes) there are no other items inside the hood (e.g. packets of screws, guarantees etc.), which should be removed and kept.

The hood is supplied with all the accessories required for installation.

The minimum distance between the lower surface of the hood and the hob must be at least 650mm with electric hob and 750mm with gas hob.

If the motor inlet is fitted with a fume non-return valve, make sure that it is free to open and close.



For easy installation, we recommend that you follow the instructions in the specific document of the model you have purchased (included in this booklet).

However, a qualified technician should verify the suitability of the materials for the type of wall/ceiling. The wall/ceiling must be strong enough to support the weight of the hood.

ELECTRICAL CONNECTION

Electrical connections should be carried out by a qualified installer.

The mains power supply voltage must be the same as that indicated on the plate inside the hood. If the hood is fitted with a plug, connect it to an approved socket in an area that is accessible, even after installation. Use a compliant two-pole switch that will ensure complete disconnection from the mains under category III over-current conditions, in accordance with the installation regulations.

INSTRUCTIONS FOR USE

For optimum and efficient use of the product, we recommended that you switch on the hood a few minutes before you start cooking and leave it on for at least 15 minutes after you have finished or until the steam and odours have been eliminated.

To start extraction, select the type of hood control and then follow the instructions described in the specific manual attached to this booklet.

CLEANING AND MAINTENANCE

Always disconnect the hood from the power supply before carrying out cleaning and/or maintenance

Regular cleaning ensures that the appliance provides good performance and a long service life.

Special attention should be paid to the grease filters and carbon filters (filtering mode only).

N.B. The accumulation of grease inside the filter panels as well as affecting the performance of the extractor hood can also be a fire hazard.

EXTERNAL CLEANING

The hood should be cleaned externally and internally using a damp cloth and a neutral liquid detergent. Do not use solvents or abrasive substances.

For stainless steel parts: we recommended that you always clean the steel parts of the hood in the direction of the surface finish.

CLEANING METAL FILTERS

Special attention should be paid to the metal grease filter panels. The accumulation of grease inside the filter panels, as well as affecting the performance of the extractor hood, can also be a fire hazard.

To minimise the risk of fire, the filters should be cleaned regularly, at least once a month, or more often if the appliance is used intensively.

Wash the filters thoroughly by hand using a neutral detergent or in a dishwasher. Reinstall the filters, making sure that the handle is facing towards the outside of the hood, towards the hob and the user.

REPLACING THE CARBON FILTERS (filter version only)

Carbon filters retain odours until the material becomes saturated.

Refer to the specific model instructions for washing and/or regeneration, if applicable, and the replacement of filter(s).

LAMP REPLACEMENT

Always disconnect the hood from the power supply before carrying out cleaning and/or maintenance

The hood is equipped with a LED lighting system.

The LEDs guarantee optimum lighting, last up to 10 times longer than traditional lamps, and allow energy savings of up to 90%.

If it needs to be replaced due to wear or if it is faulty, the entire lighting system should be replaced. In this case, please contact Technical Support. This appliance is fitted with a class 1M white LED light according to EN 60825-1: 1994 + A1:2002 + A2:2001; maximum optical power emitted@439nm: 7μW- Do not look at the light directly using optical instruments (binoculars, magnifying glass etc.).

WARRANTY AND TECHNICAL ASSISTANCE SERVICE

The hood packaging includes, together with this operating and maintenance booklet, the **Smeg Warranty Booklet**.

Please read the **Smeg Warranty Booklet** for complete information about the warranty (N.B. lamps and filters are not covered by your warranty).

In the case of failure, please call

Customer Service

In the US - 888.763.4782

In eastern Canada - 844.778.7634

In western Canada - 630.430.5253

and provide the following data:

- The model indicated on the label inside the hood
- Your full address
- Your telephone number
- Information on the kind of failure